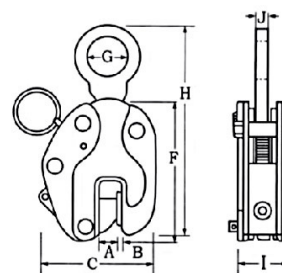


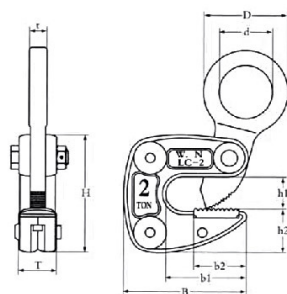
## VERTICAL & HORIZONTAL CLAMP

### Vertical Clamp E



Model No.		E10	E20	E30	E50	E70	E100
Capacity	(tonnes)	1	2	3	5	7	10
Grab opening	(mm)	0-20	0-30	0-35	0-45	0-50	0-50
Dimensions (mm)	A	23	34	40	50	55	55
	B	28	42	44	57	82	92
	C	125	165	175	218	263	286
	F	155	190	225	260	302	345
	G	50	58	60	65	65	70
	H	260	304	362	416	468	510
	I	50	60	76	90	107	124
Net Weight	J	14	17	18	20	25	30
	(kg)	3.8	6.0	9.3	18.5	33.0	48.5

### Horizontal Clamp LC



Model No.		LC10	LC20	LC30
Capacity	(tonnes)	1	2	3
Grab opening	(mm)	1-13	3-22	12-35
Dimensions (mm)	B	105	137	173.5
	b1	66	87	107
	b2	44	58	68
	D	72	96	80
	d	46	61	35
	H	104	130	177
	h1	24	36	42
	h2	40	50	67.5
	T	32	42	52
Net Weight	t	14	18	23
	(kg)	1.6	3.9	8.9